



# District 21 Insider

January 30, 2012

## February Calendar of Events

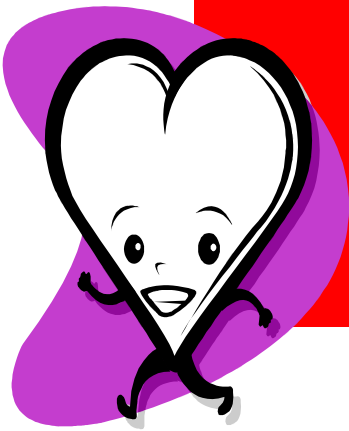
### Lowpoint Washburn School District 21

- February 1 J.H. Girls VB with Midland—Here—4:00 pm  
Booster Club Meeting—H.S. Library—7:00 pm
- February 2 J.H. Girls VB with St. Mary's—Here—6:00 pm
- February 3 H.S. Boys BB with Peoria Christian—Here—6:00 pm
- February 4 Homecoming Dance—H.S. Gym (lock-in after)
- February 6 J.H. Girls VB with El Paso/Gridley—Here—6:00 pm
- February 7 H.S. Boys BB with Heyworth—There—5:30 pm
- February 8 J.H. Girls VB with Tonica—There—5:00 pm
- February 9 J.H. Girls VB with Henry—There—4:00 pm  
Second Grade to Ming's in Peoria
- February 10 Grades 4-8 Spelling Bee—1:00 pm  
J.H. Girls VB—8th Grade Woodford Co. at St. Mary's  
H.S. Boys BB with Woodland—There—6:00 pm  
J.H. Valentine's Dance—H.S. Cafeteria—6:30-9:00 pm
- February 11 J.H. Girls VB—8th Grade Woodford Co. at St. Mary's
- February 12 Pinewood Derby—H.S. Gym—1:00 pm
- February 15 J.H. Girls VB with Germantown Hills—Here—6:00 pm
- February 16 Third Grade to Snyder Village—9:00-11:20 am  
Financial Aid Mtg.—5:30 pm  
Parent/Teacher Conferences—5:00-8:00 pm
- February 17 NO SCHOOL  
Parent/Teacher Conferences—8:00-12:00 noon  
H.S. Girls VB—7th Grade Woodford Co. at Roanoke-Benson  
H.S. Boys BB with Henry—Here—6:00 pm  
(Booster Club Chili Supper)
-

## February calendar of events (continued)

- February 18 J.H. Girls VB—7th Grade Woodford Co. at Roanoke-Benson
- February 20 NO SCHOOL  
J.H. Girls VB—7th Grade Little Tri-County at Roanoke-Benson
- February 21 J.H. Girls VB—8th Grade Little Tri-County at El Paso/Gridley
- February 22 Kindergarten Registration—Grade School
- February 23 Kindergarten Registration—Grade School
- February 27 J.H. Girls VB Regionals at L-W  
Board of Education Mtg.—7:00 pm
- February 28 J.H. Girls VB Regionals at L-W





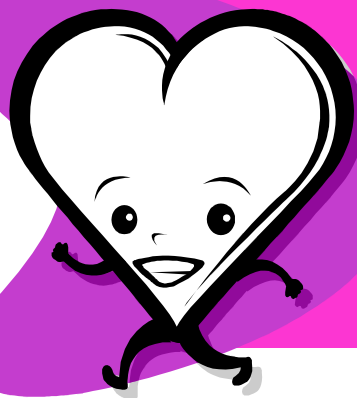
# FEBRUARY, 2012 Breakfast

508 E.  
Walnut St.

MILK SERVED  
WITH EACH

Sun	Mon	Tue	Wed	Thu	Fri	Sat
			1 Pop Tart Cereal Juice	2 Muffin Cereal Juice	3 French Toast Cereal Juice	
	6 Waffle Cereal Juice	7 Breakfast Pizza Cereal Juice	8 Biscuits/Gravy Cereal Juice	9 Donut Cereal Juice	10 Granola Bar Cereal Juice	
	13 Breakfast Bagel Cereal Juice	14 Pancake/Sausage Wrap Cereal	15 Egg/Cheese Muffin Cereal Juice	16 K-3—Yogurt 4-12—Breakfast Burrito	17 NOSCHOOL	
	20 NOSCHOOL	21 Pop Tart Cereal Juice	22 English Muffin Cereal Juice	23 French Toast Cereal Juice	24 Donut Cereal Juice	
	27 Muffin Cereal Juice	28 Granola Bar Cereal Juice	29 Breakfast Pizza Cereal Juice			





# FEBRUARY, 2012 LUNCH MENU

**508 E.  
Walnut St.  
Washburn, IL**

**MILK SERVED  
WITH EACH MEAL**

Sun	Mon	Tue	Wed	Thu	Fri	Sat
			1 Corn Dog Baked Beans Fruit Mix Ice Cream	2 Burrito Cheese, Salsa, S. Cream Corn Pears	3 Pancake Wrap Hash Browns Apple sauce Orange Juice	
	6 Ravioli Green Beans Apple Slices Bread stick	7 Chicken Fajitas Cheese, Salsa, S. Cream Corn Peaches	8 Turkey/Cheese Sub Oven Potatoes Grapes	9 Pork Patty Mashed Potatoes/Gravy Fruit Mix Bread and Butter	10 Super Nachos Lettuce Salad Pears	
	13 Chicken Patty/Bun Green Beans Apricots Rice Krispie Treats	14 Hot Ham and Cheese Chips Carrots Apple	15 Pizza Peaches Corn Cookie	16 Hot Dog Smile Potatoes Fruit Mix Pudding	17 NO SCHOOL	
	20 NO SCHOOL	21 Chicken Gravy/ Biscuits Corn Peaches	22 Macaroni and Peas Apricots Texas Toast	23 Hamburger/Bun Potato Salad Banana Cupcake	24 Sub Sand- wich Oven Potatoes Mandarin Or-	
	27 Pizza Burger on Bun Green Beans Fruit Mix Brownie	28 Chili Cheese Slice Pineapple Cinnamon Role	29 Chicken Nuggets Mashed Potatoes/Gravy Peaches Bread and Butter			



**Lowpoint Washburn  
School District 21**

508 E. Walnut  
P.O. Box 580  
Washburn, IL 61570

We're on the Web!  
[www.washburn.k12.il.us](http://www.washburn.k12.il.us)

---

## **Input to the Board of Education**

The District seeks to enhance its communication with those persons wishing to address the school board. Accordingly, the school board designates a segment during each board meeting to recognize visitors and to provide them an opportunity to address the Board. In general, the Board will listen to the presenter and if necessary, ask the administration to review the information presented and report to the Board at a future meeting, if further discussion is needed.

### Board Members

Charles Kennell—President  
Derek Henry—Vice-President  
Marge Spangler—Secretary  
Todd Aman  
Willa Warnkes-Sipp  
Jon Schumacher  
Jim Knecht

